



Building an EV Future in New Jersey

Presented By
Cathleen Lewis

Federal Priorities

- Funding for charging stations across the country
- Funding for federal fleet electrification
- Incentives for personal EVs
- Incentives for replacing diesel vehicles with ZEVs

New Jersey's Got That!

- It Pay\$toPlug, Clean Fleet, EV Tourism, utility programs
- Clean Fleet
- Charge Up New Jersey
- NJZIP, RGGI diesel replacement program





2025 EV Charging Goals

- At least **400** DC Fast Chargers shall be available for public use at no fewer than **200** charging locations
- At least **1,000** Level Two chargers shall be available for public use.
- At least **15 percent** of all multi-family residential properties in the State shall be equipped with EVSE for the routine charging of plug-in electric vehicles.
- At least **30 percent** of all multi-family properties shall be equipped for electric vehicle charging.
- At least **20 percent** of all franchised overnight lodging establishments shall be equipped with EVSE for routine electric vehicle charging by guests of the establishment by providing Level Two EVSE.



Public Charging



Utility Filings

Make Ready Incentives

- Public
- Workplace
- MUD



Fast Charging

PSEG 1200

ACE 100



Level 2

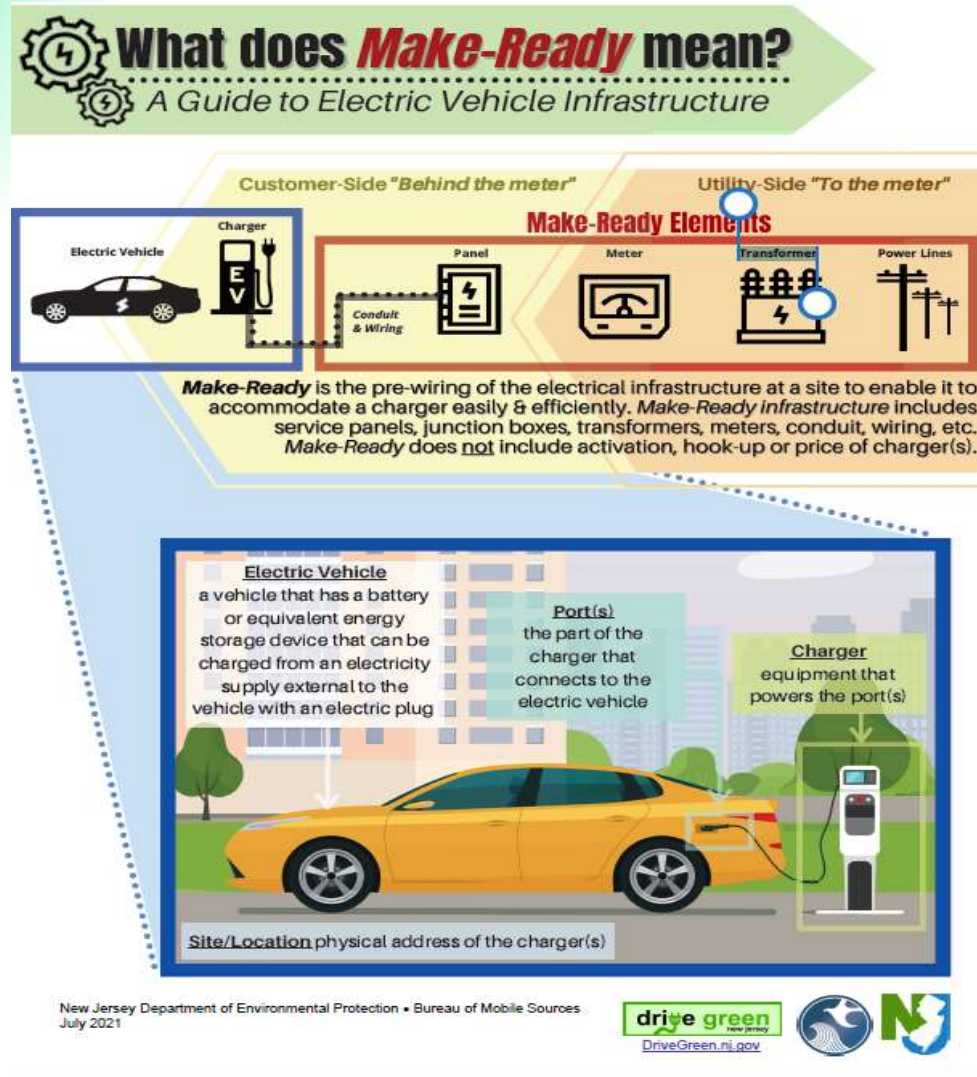
PSEG 3500

ACE 1500+



Make Ready

The infrastructure required to power an EV charger is called the Make-Ready work. By the end of 2022, all 4 electric utilities will provide programs to incentivize those costs.



PSE&G Electric Vehicle Sub-Program Incentives

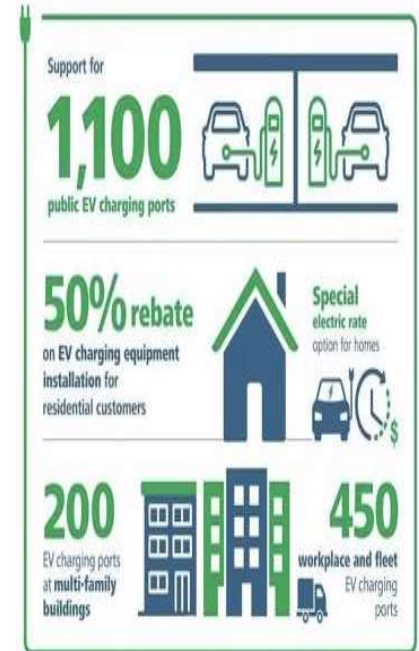
1. Residential Smart Charging		2. Level 2 Mixed Use Charging		3. Public DC Fast Charging	
Single Family Homes 		Multi-Family, Government & Publicly Accessible 		Travel Corridors & Community Locations 	
\$60M Investment	40,000 chargers	\$35M Investment	575 sites ~3,500 chargers	\$45M Investment	300 sites ~1,200 chargers
Incentives include*: <ul style="list-style-type: none"> Up to \$1,500 toward the behind the meter (BTM) installation of a residential Level 2 charger Up to \$5,000 of pole to meter (PTM) utility service upgrades (if needed) Credit on charging during off-peak periods to help lower your bill (if not already an RLM customer) 		Incentives include*: <ul style="list-style-type: none"> Up to \$30,000* toward the behind the meter (BTM) installation of commercial Level 2 chargers Up to \$10,000 for pole to meter (PTM) utility service upgrades (if needed) <p>*Note: the incentive is based on the number of chargers installed, offering up to \$7,500 per charger installation for up to four chargers per site</p>		Incentives include*: <ul style="list-style-type: none"> Up to \$100,000** per site for behind (BTM) the meter installation costs for DCFC chargers Up to \$50,000 of pole to meter (PTM) utility service upgrades (if needed) Demand Charge Rebates to help lower your electricity bill <p>**Note: the incentives is based on the number of chargers installed, offering up to \$25,000 per charger installation for up to four chargers per site</p>	

*Some incentives may depend on participants' agreement to allow PSE&G to collect charging data

ACE's programs will expand South Jersey's public EV charging network by supporting the installation of 1,100 Smart L2 and fast charging ports in locations that are available to the public 24/7.

- 1,000 Smart L2 charging ports, which can fully charge most EVs in about 3-5 hours, will be installed in communities across South Jersey
- 100 DCFC ports, which can charge most EVs to 80 percent in about 30 minutes or less, will be installed in communities across South Jersey.
- Locations will be determined by third-party providers and incentives will be provided on a first-come-first-serve basis to applicants that meet the program's parameters
- Third-party providers will install, own, and maintain the charging stations
- A new rate option for owners of public EV fast charging stations will help attract private investment in fast chargers and support the continued expansion of charging infrastructure in South Jersey

Here's how our electric vehicle programs will help you skip the gas pump



It Pay\$ to Plug In

DEP's Grant Program for EV Charging Stations

- Level 2 chargers
 - Up to \$4,000 per port for Level 2 chargers at public places, multi-family homes and workplaces (including fleets).
 - *First-come first-served. We are accepting applications now for the waiting list.*
- Fast Chargers
 - Up to \$200,000 per location for public fast chargers.
 - Competitive solicitation.
 - Currently open for community charging locations
 - Stay tuned for future funding rounds.

www.drivegreen.nj.gov/plugin.html



MUD EV Charging Incentives

A Program that encourages Multi-Unit Dwellings (MUDs) to install chargers



Provides incentives for chargers

- \$1500 per L2 charger
- 50% of make ready, up to \$5,000 per L2 charger
- Chargers in Overburdened municipalities may receive \$2000 per charger and \$7,500 for make ready.

Sites are eligible for up to 6 L2 chargers .

njcleanenergy.com/ev



MUD EV Charging Incentives cont.



- Eligible MUDs are dwellings with 5 or more units that have dedicated off-street parking
- Property owners or managers may apply
- Property managers must include a letter from the property owner authorizing the application.

Applications due by May 2, 2021.

njcleanenergy.com/ev



Clean Fleet



- \$2,000 for a public L2 charger
- \$1,500 for a fleet L2 charger
- 50% (up to \$5,000) for the Make-Ready for an L2 charger
- 50% (up to \$75,000) for the Make-Ready and charger for a Fast Charger.

njcleanenergy.com/ev



EV Tourism

A Program that encourages tourism destinations to invest in EV charging infrastructure



Provides incentives for chargers:

- \$2000 per L2 charger
- 50% of make ready, up to \$5,000 per L2 charger
- 50% of DCFC (charger and make ready), up to \$75,000 per charger

Sites are eligible for up to 6 L2 chargers and 2 DCFC.

Round 2 coming soon

njcleanenergy.com/ev





EV Goals

- At least **330,000** registered light duty EV by December 2025
- At least **2 million** registered light-duty EVs by December 2035;
- At least **85 percent** of all new light-duty vehicles sold or leased in the State shall be plug-in EVs by December 2040
- At least **25 percent** of State- owned non-emergency light-duty vehicles shall be EVs by December 2025
- **100 percent** of State-owned non- emergency light-duty vehicles shall be plug-in electric vehicles by December 2035

Charge Up New Jersey



Up to \$5,000 for EVs

- \$25 per e-mile
- MSRP must be under \$55,000
- tiered incentive to prioritize incentive essential buyers and lesors

\$30 million funding pot

- Funding required each year for 10 years through the EV ACT

Program currently paused


- The Charge Up New Jersey Program has been successful for the second year in a row. The program was paused on September 15, 2021.

chargeup.njcleanenergy.com



Clean Fleet Program

- Electric vehicles are now included on the State Purchasing Contract under AwardT0099
- \$4,000 per battery electric vehicle
- Grants awarded on rolling basis until funding expended
- Questions?
EV.programs@bpu.nj.gov



	EVs	Charging stations
Local governments, entities, schools		
<i>serving populations < 20,000</i>	2	1
<i>serving populations > 20,000</i>	5	2
<i>serving populations > 50,000</i>	7	4
Local governments		
<i>serving populations > 100,000</i>	10	4
State agencies, boards, commissions, universities, and counties	10	4

www.NJCleanEnergy.com/EV



Overburdened Municipalities

- The listed locations are considered Overburdened Municipalities and may be eligible for bonus incentives for BPU EV programs

Municipality	County	Municipality	County
Asbury Park City	Monmouth	Millville City	Cumberland
Atlantic City	Atlantic	New Brunswick City	Middlesex
Bridgeton City	Cumberland	Newark City	Essex
Buena Boro	Atlantic	North Wildwood City	Cape May
Camden City	Camden	Passaic City	Passaic
Cape May Point Boro	Cape May	Paterson City	Passaic
Chesilhurst Boro	Camden	Paulsboro Boro	Gloucester
City of Orange Twp	Essex	Penns Grove Boro	Salem
Clementon Boro	Camden	Perth Amboy City	Middlesex
Commercial Twp	Cumberland	Phillipsburg Town	Warren
East Newark Boro	Hudson	Plainfield City	Union
East Orange City	Essex	Pleasantville City	Atlantic
Egg Harbor City	Atlantic	Prospect Park Boro	Passaic
Elizabeth City	Union	Salem City	Salem
Fairfield Twp	Cumberland	Seaside Heights Boro	Ocean
Flemington Boro	Hunterdon	Trenton City	Mercer
Freehold Boro	Monmouth	Union City	Hudson
Harrison Town	Hudson	Victory Gardens Boro	Morris
Hi-nella Boro	Camden	Vineland City	Cumberland
Irvington Twp	Essex	West New York Town	Hudson
Lakewood Twp	Ocean	Wildwood City	Cape May
Lindenwold Boro	Camden	Woodbine Boro	Cape May
Long Branch City	Monmouth	Woodlynne Boro	Camden
Maurice River Twp	Cumberland	Wrightstown Boro	Burlington



@NJCleanEnergy



Contact info

Cathleen Lewis
E-Mobility Programs Manager
Cathleen.Lewis@nj.bpu.gov

Visit
NJCleanEnergy.com

Newsletter
NJCleanEnergy.com/NEWSLETTER

Listservs
NJCleanEnergy.com/LISTSERVS