

Walking-Working Surfaces

Eliminating Common Dealership Conditions
that cause Slips, Trips, and Falls



Think of a time where
you have slipped or
tripped and fell

Aside from the pain
and embarrassment:

Can you recall the
conditions leading to
the accident?



TOPIC OBJECTIVES



Awareness- Identify the types of hazardous walking surfaces common to your workplace



Requirements- Minimum requirements for maintaining safe walking and working surfaces



Correction- Correcting unsafe conditions and behaviors

Hazards

+

•



ICE AND SNOW





Wet Floors



Cluttered Aisles

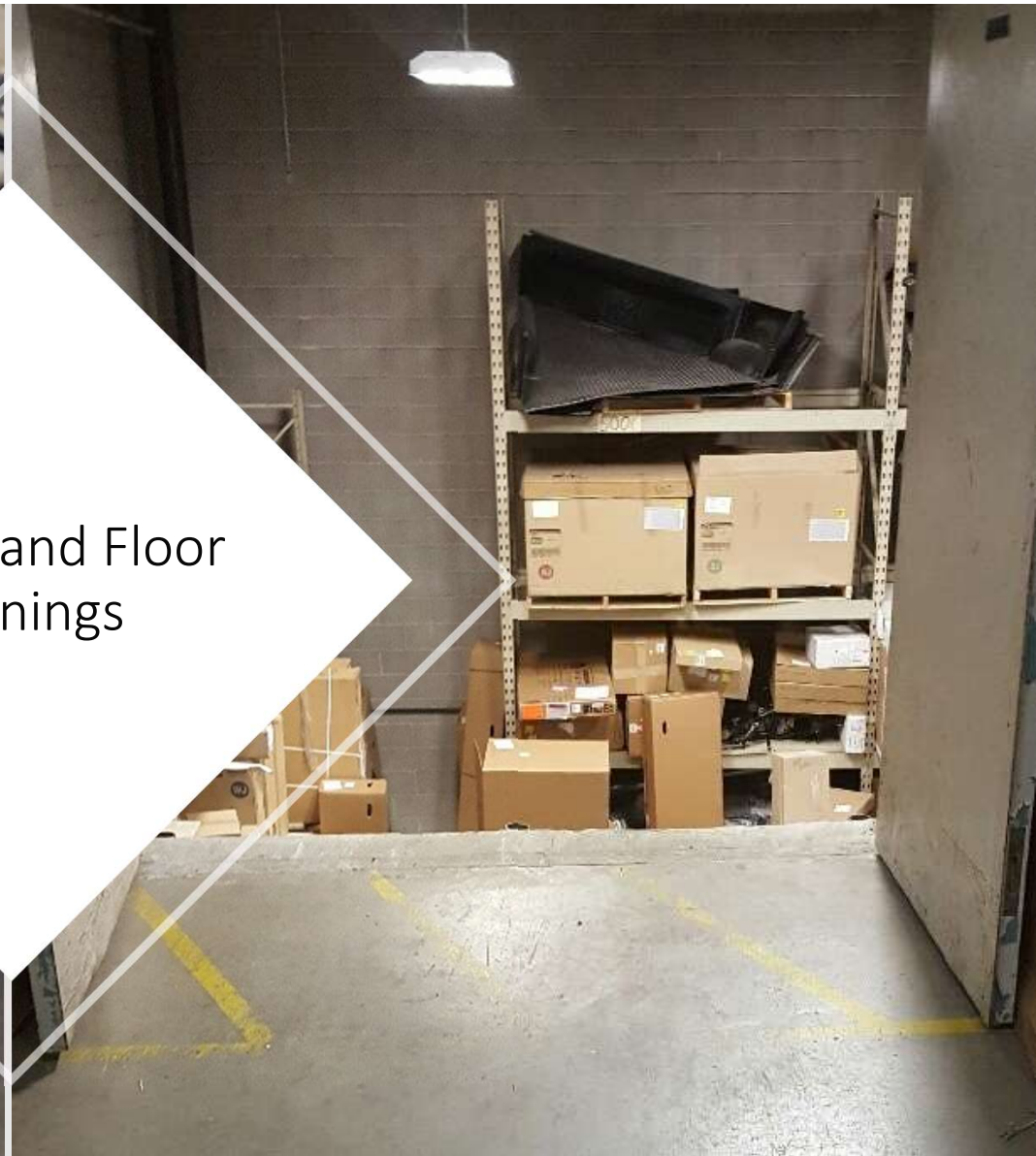


Stairs





Ladders and Floor Openings



A red, flexible hose is coiled on a grey, textured concrete floor. The hose forms several overlapping loops on the left side of the frame, with the rest of the hose extending towards the top right corner. The lighting is even, highlighting the smooth surface of the hose and the speckled texture of the floor.

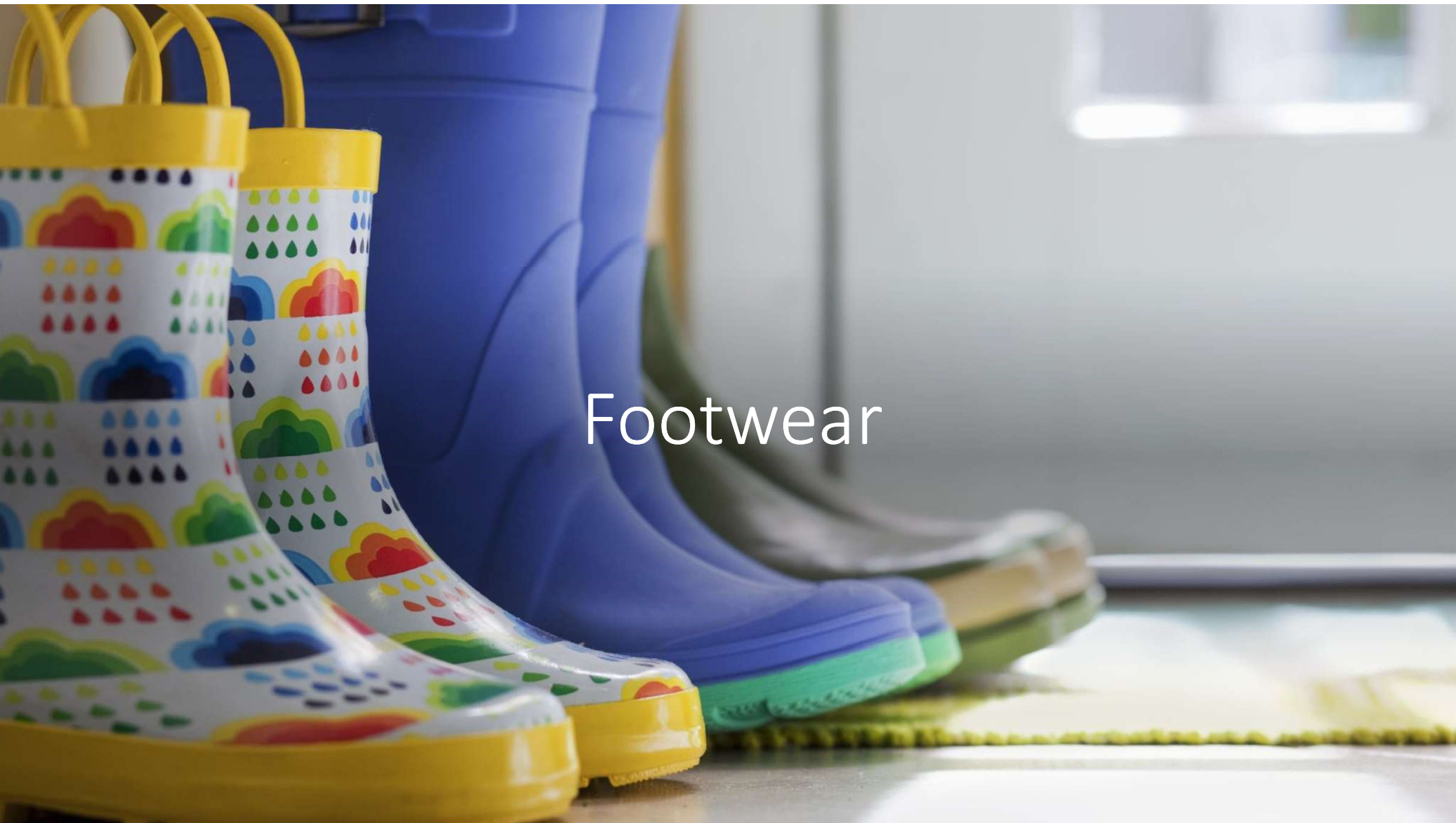
Hoses and Cords



Floor Mats & Rugs

Uneven Surfaces





Footwear

The Average person takes how many steps per day?

Slip and falls mostly occur on?

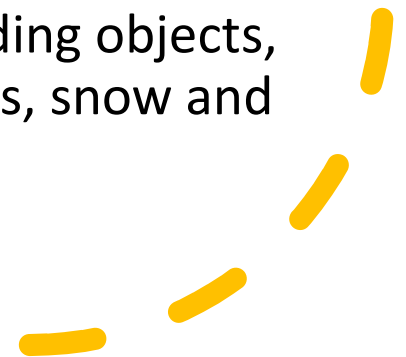
What percentage of trip and falls are caused by improper footwear?

What condition in the workplace is the leading cause of accidental falls?



Minimum Walking- Working Surface Safety Requirements:

- All passageways, storerooms, service rooms, and walking-working surfaces are kept in a clean, orderly, and sanitary condition.
- The floor of each workroom is maintained in a clean and, to the extent feasible, in a dry condition. When wet processes are used, drainage must be maintained and, to the extent feasible, use dry standing places, such as mats.
- Walking-working surfaces are maintained free of hazards such as sharp or protruding objects, loose boards, corrosion, leaks, spills, snow and ice.



The background of the slide features a horizontal color gradient that transitions from a deep blue on the left to a warm orange on the right. A thin, vertical white line is positioned approximately one-third of the way across the slide, separating the blue-toned area from the orange-toned area.

Prevention

Ice and Snow

Get ahead of and stay on top of winter weather!

- Only use snowblowers in safe working order
- Use quality shovels
- **Practice Snow and Ice Removal Safety- Ploughing, Shoveling correctly**
- Use salt and other melting agents
- Have a snow and ice removal plan that addresses Freeze/Thaw cycle
- Keep everyone's health and safety the primary focus



Wet Floors

- Resolve wet floors immediately
- Place “Caution Wet Floor” signs out during inclement weather
- Keep drains clear and place non-slip mats in areas where wet floor conditions exist
- Dry mop wet floors several times throughout the day
- Large V. Small spills (effective spill kits and absorbents)



Aisles

- Remember to practice good housekeeping to prevent slip trip and falls
- Keep all aisles and walkways clean and clear
- Mark permanent aisles and passageways





Stairs

- Keep all stairways clear and open for passage
- Even if stairs are not used, they must remain clear for emergency responders- think fire emergency
- Get help when moving large objects up and down steps
- Guard stairs with a standard railing with toe board on all exposed sides (except entrance)

Ladders

- **Broken Ladder**- remove from service immediately tag it with “**DO NOT USE**”, put it in a place where it will not be used, and notify your supervisor
- Only have ladders repaired by a repair person or organization approved by the ladder manufacturer
- Never carry a load up or down a ladder
- Never stand on top steps
- Always use three points of contact when ascending and descending a ladder





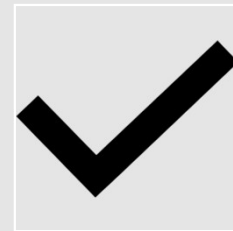
Hoses and Cords



Awareness- stay aware of your surroundings



Don't place hoses and cords across doors or other common walkways



Coil and store all hoses and cords away and off the floor whenever not in use



Floor Mats and Rugs

- Correct curling and buckling mats
- Curling buckling mats will always increase the chance of serious trip and falls accidents.
- Schedule times throughout the day to correct curling buckling mats.
- If you spot curling or buckling of rugs or mats and its not your department/responsibility report it immediately



Uneven Surfaces



Keep uneven
surfaces clearly
marked

Put up railing and
barriers to
prevent trip and
falls

1) **True or False-** good housekeeping is the best method to prevent slip trips and falls?

2) Identify proper footwear:

A) Tennis shoes

B) Flip Flops

C) Crocs

D) Shoes that include ankle support, and non-slip soles

3) **True or False-** Its completely safe to stand on the very top steps of a ladder

4) How many **points of contact** should a person always have on a ladder?

A) 1

B) 2

C) 3

D) None of the Above

5) **True or False-** If a defective ladder is found immediately mark it defective tag it “DO NOT USE” and withdraw it from service until repaired

The problem
with ignoring
slip, trip, and
fall hazards?

Unnecessary Human Suffering- significant and potentially fatal injuries can happen to you and your co-workers



Questions?

Charles Russo

Risk Manager Health, Safety, and Insurance

Ph: 609.883.5056.

C: 215.356.9839

Email: crusso@njcar.org

Web: www.njcar.org